



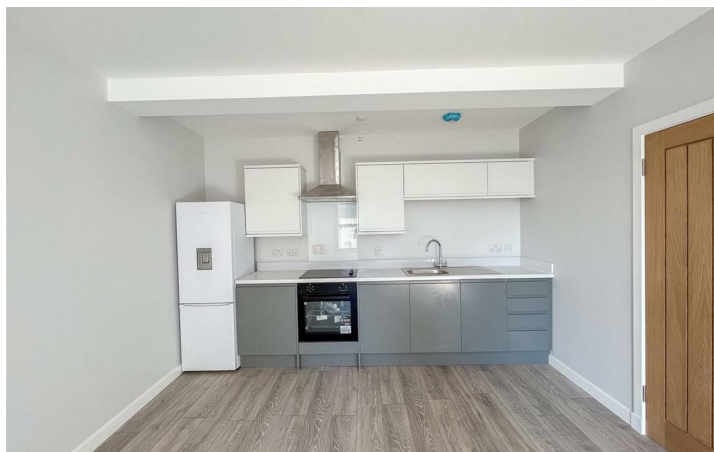
Flat 2 38-42 Hide Hill

Berwick-Upon-Tweed, Northumberland, TD15 1EY

Fixed Asking Price £115,000

Forming part of this new and exciting development of six one and two bedroom apartments, which are conveniently located on Hide Hill in the centre of Berwick and therefore easy walking distance to all the facilities within the town. The flats are a short walk away from walks along the famous town walls and the River Tweed, This apartment would make an ideal home for a first time buy, retired person, or as a holiday let. Apartment 2 is located on the first floor with views to the front of the surrounding areas, there is double glazing, electric heating, a door entry phone and will be finished to a high standard with modern fixtures and fittings throughout.

The apartment extends to approximately 49 square meters and comprises of an entrance hall with an airing cupboard, a large open plan kitchen/living room/dining area which has a window to the front and will have modern kitchen units with appliances. The property has a double bedroom with a window to the front and a modern white shower room, with an electric shower. Viewing is highly recommended.



Entrance Hall

Lounge/Kitchen Area

Bedroom 1

Double bedroom.

Bathroom

General Information

All fitted floor coverings included sale.

Newly installed double glazing windows.

Energy Rating C (72)

Leasehold. 299 years remaining.

Council Tax Band (TBC)

Agency Information



Important Information You may download, store and use the material for your own personal use and research. You may not republish, retransmit, redistribute or otherwise make the material available to any party or make the same available on any website, online service or bulletin board of your own or of any other party or make the same available in hard copy or in any other media without the website owner's express prior written consent. The website owner's copyright must remain on all reproductions of material taken from this website.

Berwick Office
36 Hide Hill, Berwick-upon-Tweed
Northumberland, TD15 1AB

T: (01289) 307571
F: (01289) 302948
E: berwick@aitchisons.co

Wooler Office
25 High Street, Wooler
Northumberland, NE71 6BU

T: (01668) 281819
F: (01668) 281717
E: wooler@aitchisons.co



Zoopla.co.uk

